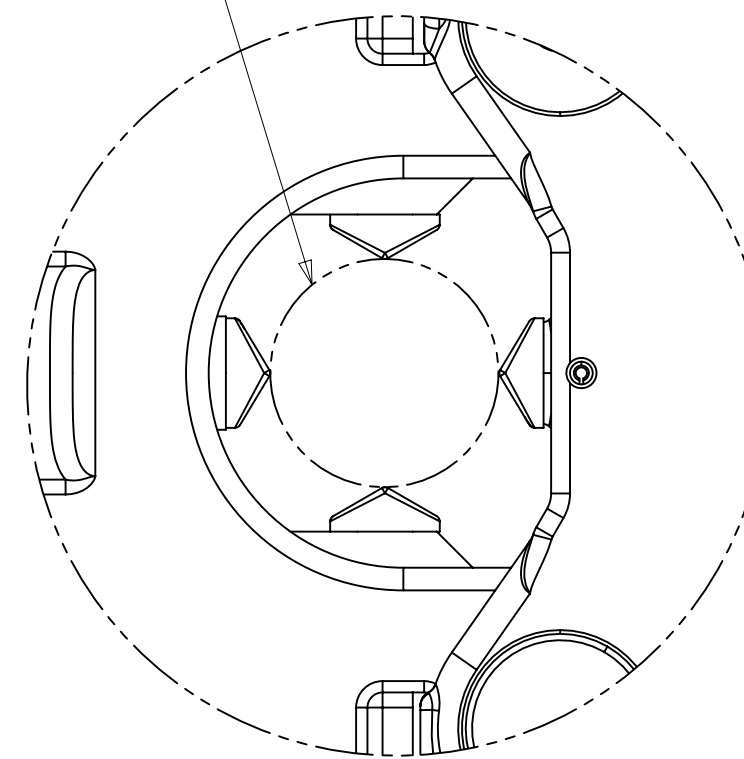


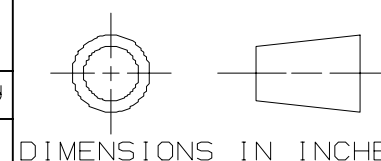
1. WHEN THE NIBS ARE IN THE FULLY OPEN POSITION, THE TOOL OPENING IS 1.512 / 1.476 INCHES (38.4/37.5 MM)
2. WHEN THE NIBS ARE IN THE FULLY CLOSED POSITION, THE TOOL OPENING IS .237 INCHES (6.35 MM).
3. CABLE RANGE:
 VC6FTSP- #10 STR - 750 MCM AL/CU
 VC7FTSP- #10 STR - 750 MCM CU ONLY
4. HEAD ROTATES 360° TO ALLOW CRIMPING AT ANY ANGLE.
5. TWO STAGE PUMP DESIGN RESULTS IN QUICKER CLOSING OF NIBS TO REDUCE AMOUNT OF PUMPS AND OVERALL CRIMPING TIME.
6. OPERATING PRESSURE SET AT 8500 PSI.
7. ERGONOMIC RUBBER OVERMOLDED HANDLES.
8. INSTRUCTION MANUAL CONTAINS PARTS LIST, REPAIR KITS, AND DETAILED EXPLODED VIEW.
9. INCLUDES ERGONOMICALLY BALANCED DURABLE PLASTIC CARRYING CASE.

SEE NOTE 1 AND 2



DETAIL B
SCALE 1:1

EC #	REV	DESCRIPTION	DATE	CHG BY	APPR'd
57022	00	INITIAL RELEASE	8/11/14	JES	JES
REVISION HISTORY					



ANDERSON®
TOLERANCE CHART

0.0	±0.060	ANGLES ±12°
0.00	±0.015	DO NOT USE FRACTIONS EXCEPT AS NOTED
0.000	±0.005	

CONFIDENTIAL: THIS DRAWING AND ITS CONTENTS ARE CONFIDENTIAL AND THE EXCLUSIVE PROPERTY OF HUBBELL POWER SYSTEMS. NO PUBLICATION, DISTRIBUTION OR COPIES MAY BE MADE WITHOUT THE WRITTEN CONSENT OF HUBBELL POWER SYSTEMS. HUBBELL POWER SYSTEMS UNPUBLISHED ALL RIGHTS RESERVED UNDER THE COPYRIGHT LAWS.

HUBBELL® POWER SYSTEMS	
VERSACRIMP HYDRAULIC COMPRESSION TOOL	
SIZE DWG NO.	CAT / PART / ASSY NO.
C CC-22319	VC6FTSP & VC7FTSP 00
SCALE: NONE	DRN BY: JES DATE: 8/11/14 SHEET 1 OF 1